



The Impact of Social Sciences and Humanities on Society

14-16 October 2020, Ottawa

12.30 – 13.45pm

Research Development for Impact

Kim Patten (Chair) – University of Arizona

Wim van den Doel – Leiden-Delft-Erasmus Universities Alliance

Ursula Gobel – Social Sciences and Humanities Research Council

Research Development for Impact:

Creating impact through team-based, interdisciplinary, and global approaches



An open white door with a brass handle, set in a room with white walls and a light-colored wooden floor. The door is open, revealing a bright, empty room beyond. The text "Sense of the room..." is overlaid in blue on the left side of the image.

Sense of the room...

Research Development U.S.-based Resources & Institution Overview

Kim Patten

Assistant Vice President, Research Development

The University of Arizona in Tucson, Arizona

kjpatten@arizona.edu

October 16, 2020

AESIS 2020





Institution Profile

- Association of American Universities
- State of Arizona Land-Grant
- U.S. Department of Education Hispanic Serving Institution
- Colleges (in addition to liberal arts & sciences colleges):
 - Architecture & Landscape Architecture
 - Business College
 - Medical Schools (two of them)
 - Law School
 - Veterinary School
- Support units including *Office of Societal Impacts, Hispanic Serving Institution Initiatives, Graduate Center, Postdoctoral Affairs,*
- Cross-disciplinary Centers & Institutes including *Confluentcenter for Creative Inquiry, Biosphere 2, Arizona Institutes for Resilience,* and multiple *Museums & Cultural Centers* (e.g. Flandrau Planetarium, Arizona State Museum, Poetry Center)



The University of Arizona resides on the traditional territory of the Tohono O'odham and Pascua Yaqui people.

RII Research & Business Development

Research Development:

- Proposal Development
- Seminars & Workshops
- Finding Funding & Collaborators

Corporate Services:

- Partners & Opportunities
- Build Relationships
- Proposal Development
- Connecting w/ Campus Colleagues

Global Research & Scholarly Exchange:

- Fulbright Liaison
- Partners & Opportunities
- Proposal Development
- Connecting w/ Campus Colleagues

Global Projects & Defense Offsets:

- Opportunity forecasting
- Partnership Development
- Proposal Development
- Program Management

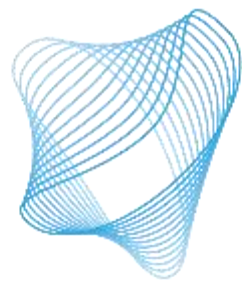




International Research Development = Partnerships!

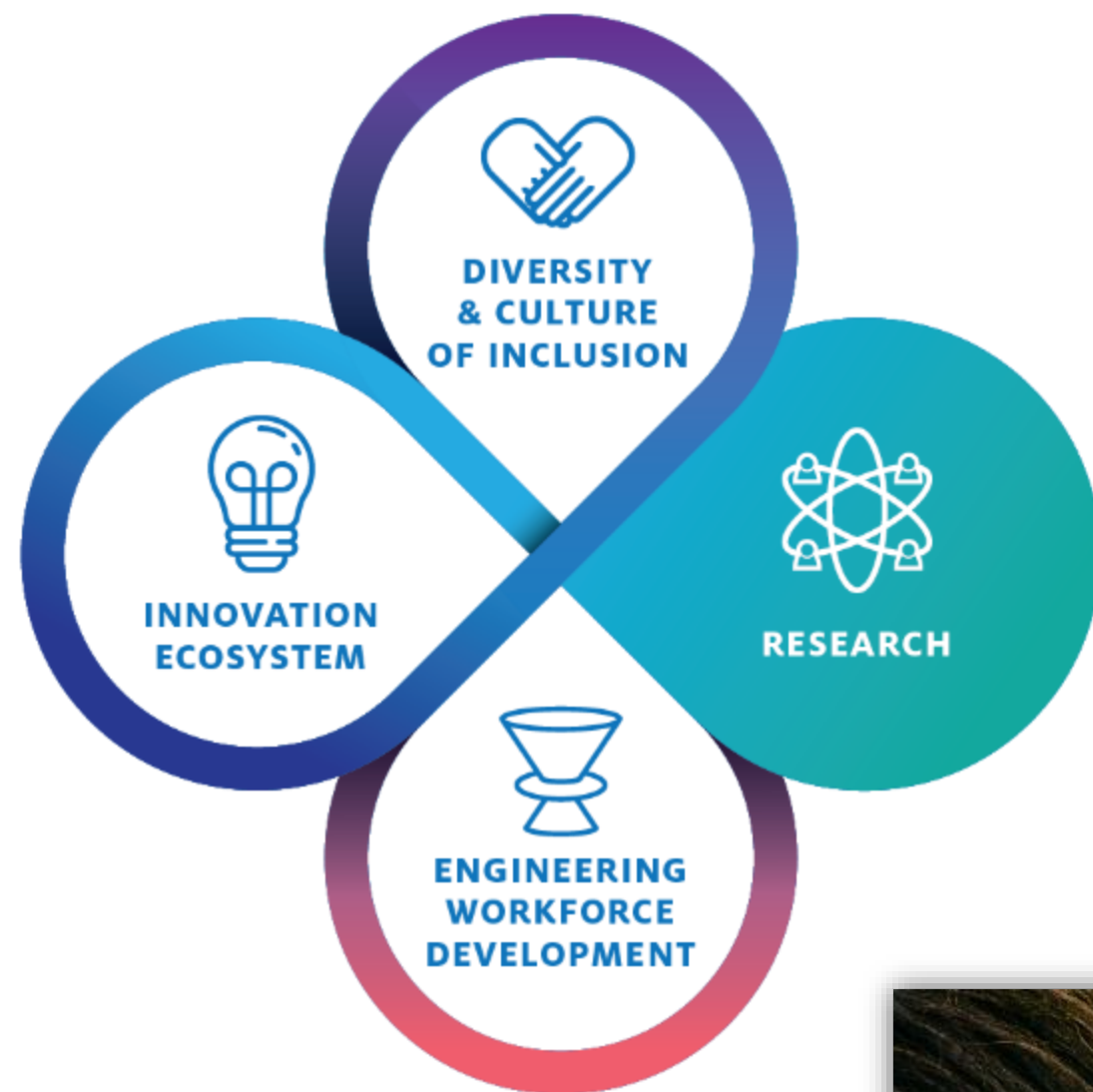
- Contracting: MOUs & Partnership Agreements w/ Global Institutions
- Global & Study Abroad Office (Student & Staff Support)
- Risk Management & International Travel Safety Oversight Committee
- Micro-Campus Network for Dual Degree Programs
- Human Resources & Legal Counsel for Hiring
- Research Administrators & Sponsored Projects Office
- Faculty – driving the collaboration





Center for Quantum Networks

A National Science Foundation Engineering Research Center





Challenges Ahead...

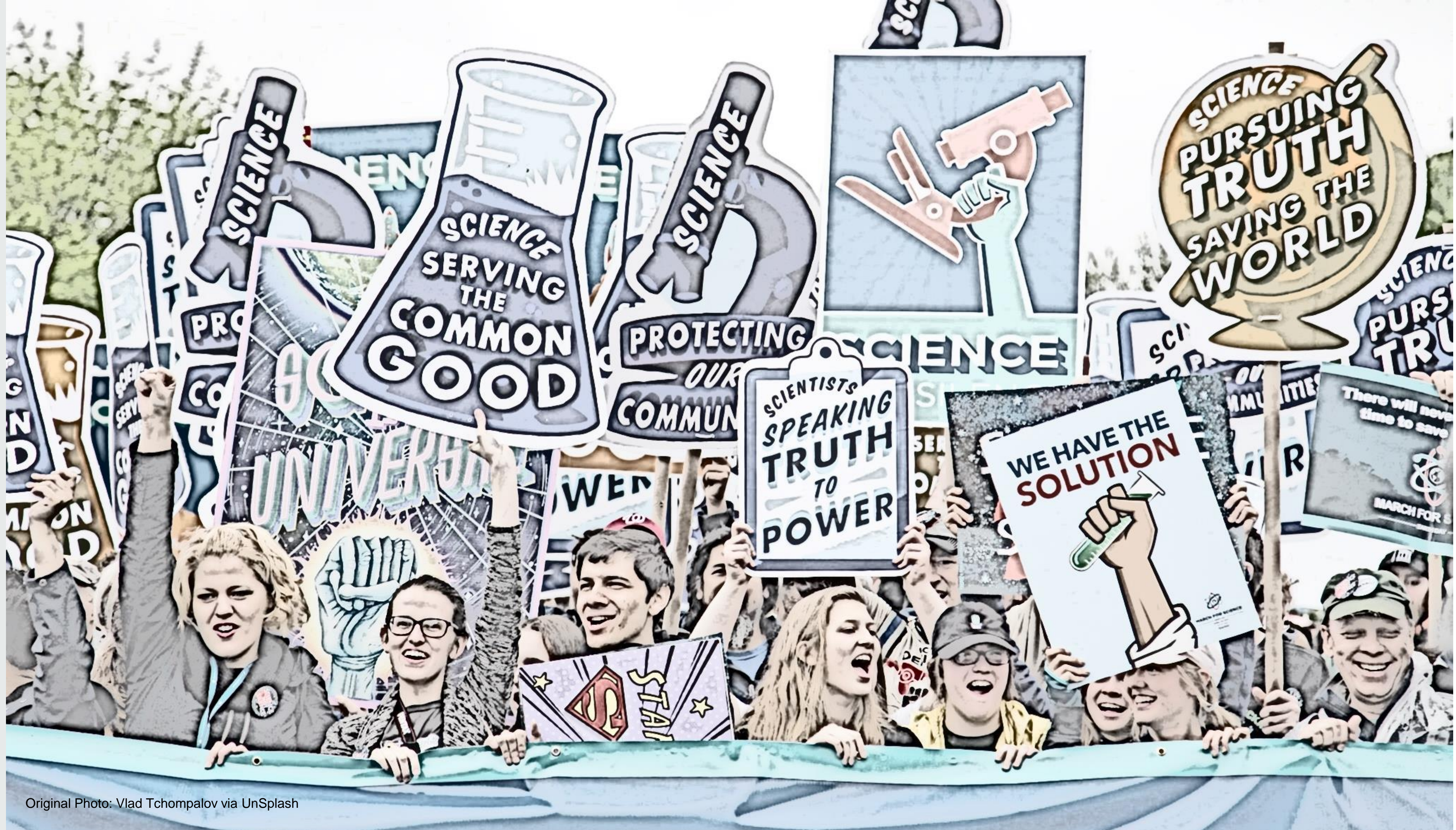
NORDP

National Organization of
Research Development Professionals

- National Organization of Research Development Professionals
 - www.nordp.org

ARIS

- Advancing Research Impact in Society (NSF Center)
 - www.researchinsociety.org/



Original Photo: Vlad Tchompalov via UnSplash

Research developments for impact Examples from the Netherlands

September 2020



Universiteit
Leiden



Erasmus
University
Rotterdam



Looking for impact

After the 18th century the raison d'être of universities always has been to be relevant to society through high quality education and research. Over the last decades the demand from policy and society for universities to have broad impact on all kinds of societal challenges has become even stronger. As a result, societal impact has come to be formulated as a third mission of universities next to education and research. In the 21st century: accelerated international competition of research, but at the same time governments felt a growing need for research to have more local economic impact.



Looking for impact

Knowledge Production and the Economy: the Linear Model

one-way traffic from (fundamental) research to applications, where Technology Readiness Levels (TRLs) play an important role: *still very much alive.*

The 'New Production of Knowledge'

knowledge is transdisciplinary, allowing for other than academic expertise to come in, and subject to multiple accountabilities



Universiteit
Leiden



Erasmus
University
Rotterdam



Looking for impact

Knowledge Production and Societal Impact: The Dynamic Model of Productive Interactions

An interaction entails a contact between a researcher and a stakeholder. Interactions are distinguished in three categories, direct (between people), indirect (via media) or material (financial or other forms of support). The interaction is productive when it leads to efforts by stakeholders to apply research results to societal goals, i.e. when it induces behavioural change.



Public consultation: 12.000 research questions asked.
Concentrated in 25 research “routes”.

Co-creation, co-design

Research consortia with stake holders

‘Impact plan approach’ (societal change) and “Impact
outlook approach” (scientific)

Example: National
Research Agenda (NWA) (N€130)
The aim of the NWA call for proposals is to fund
research and innovation focused on the NWA routes,
designed and implemented by interdisciplinary
consortia spanning the entire knowledge chain, in
which relevant social partners are also represented”



INTERSCT.

Towards an internet of secure things

The R&D and (technological) innovation programme
National Research Agenda

Cyber Security of Internet-of-Things is supported by more than 40 partners from academia, industry, government and civil society.



Leiden Delft Erasmus
Universities

Innovation policy (M€ 118)

“Mission-driven research requires an integral approach, in which researchers in humanities, natural sciences and social sciences work together and approach an issue from different disciplines. Only when technological and social innovation go hand in hand will successful innovations emerge. NWO therefore calls for explicit attention to interdisciplinary collaboration.”
Public-Private Partnerships: co-creation, co-design, co-funded.
Industrial and Societal Doctorates



Universiteit
Leiden

 TU Delft

Erasmus
University
Rotterdam

The Erasmus University logo, featuring a stylized signature of the name 'Erasmus'.

Interdisciplinarity does not occur naturally: it has to be organized: centres, hubs, spaces.


Co-creation and co-design needs to be organized. Societal partners have questions but not always *research* questions. Invest in the process.

The Dynamic Model of Productive Interactions: work with societal partners on a permanent basis: societal doctorates, conferences, policy briefs,

SSH researchers have to engage with their STEM colleagues!

SSH researchers should *take the lead* in making interdisciplinary teams





**Fostering team-based, interdisciplinary,
and global approaches to address societal
challenges**

**URSULA GOBEL, VICE-PRESIDENT,
STAKEHOLDER ENGAGEMENT AND ADVANCEMENT OF SOCIETY**

AESIS CONFERENCE, OCTOBER 16,
2020



Social Sciences and Humanities
Research Council of Canada

Conseil de recherches en
sciences humaines du Canada

Canada

MOMENTUM

2020-2022

- **Enhance Canada's global leadership in social sciences and humanities research**
- **Grow Canada's research talent**
- **Strengthen the research enterprise in Canada**
- **Contribute innovative solutions to global challenges and opportunities**
- **Build a nimble, forward-looking SSHRC organization**

... enabling interdisciplinary and international research collaborations

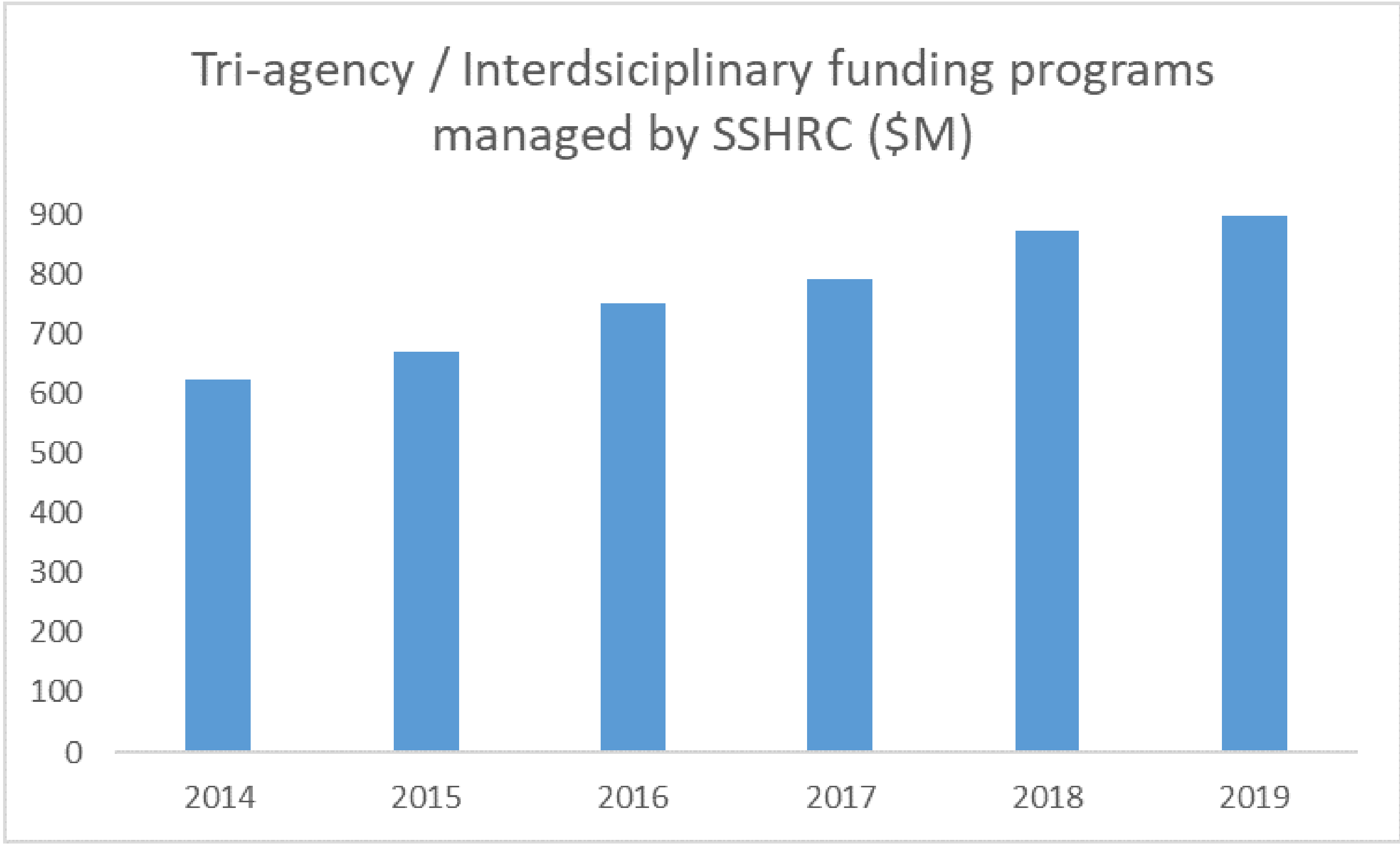
... strengthening Indigenous research capacity

... addressing global challenges

... developing skills in communication and knowledge mobilization

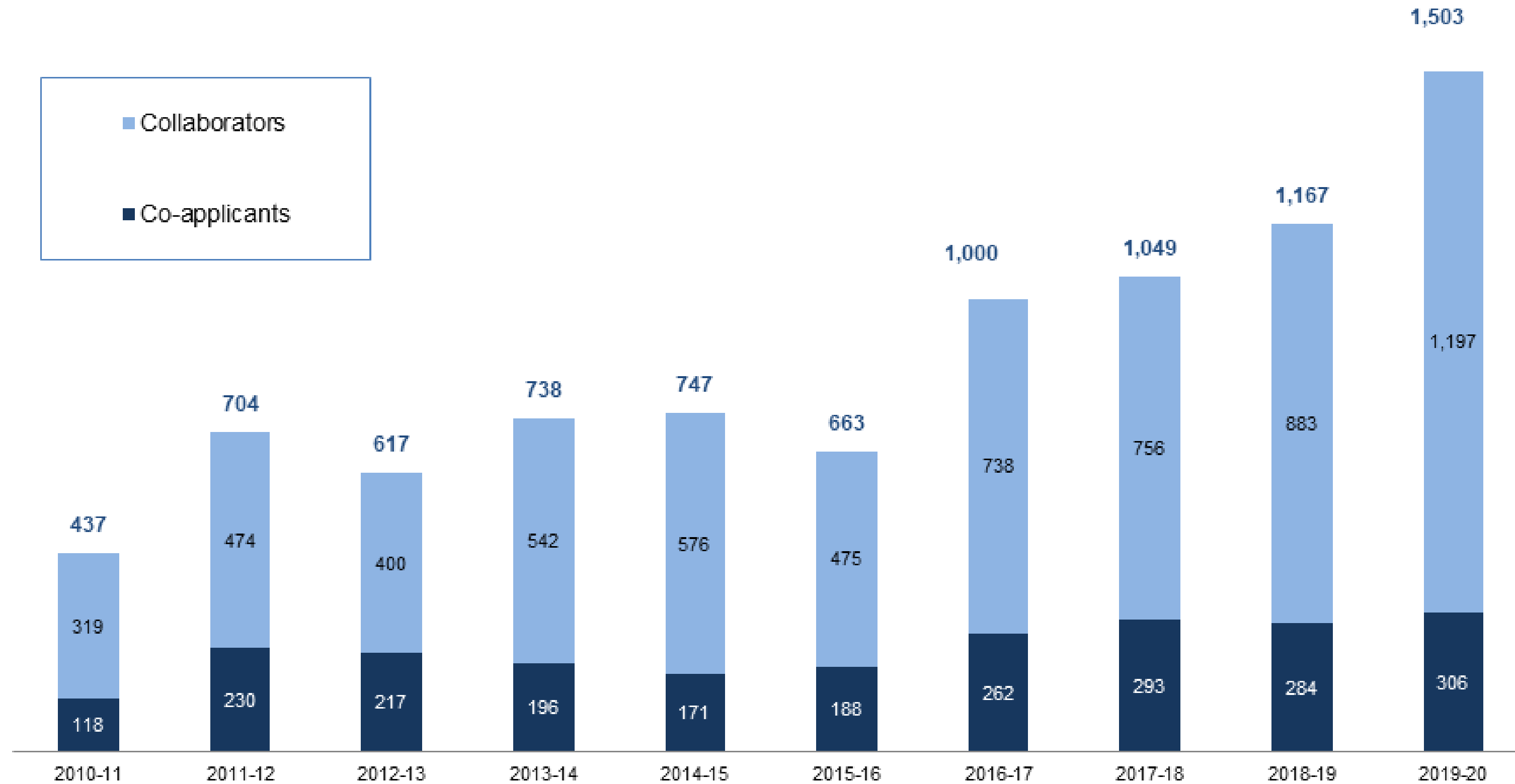
... sharing and demonstrating the value of research

Leadership role in interdisciplinary research



International Collaborations

Number of international researchers involved in SSHRC-funded grants



Setting new

directions

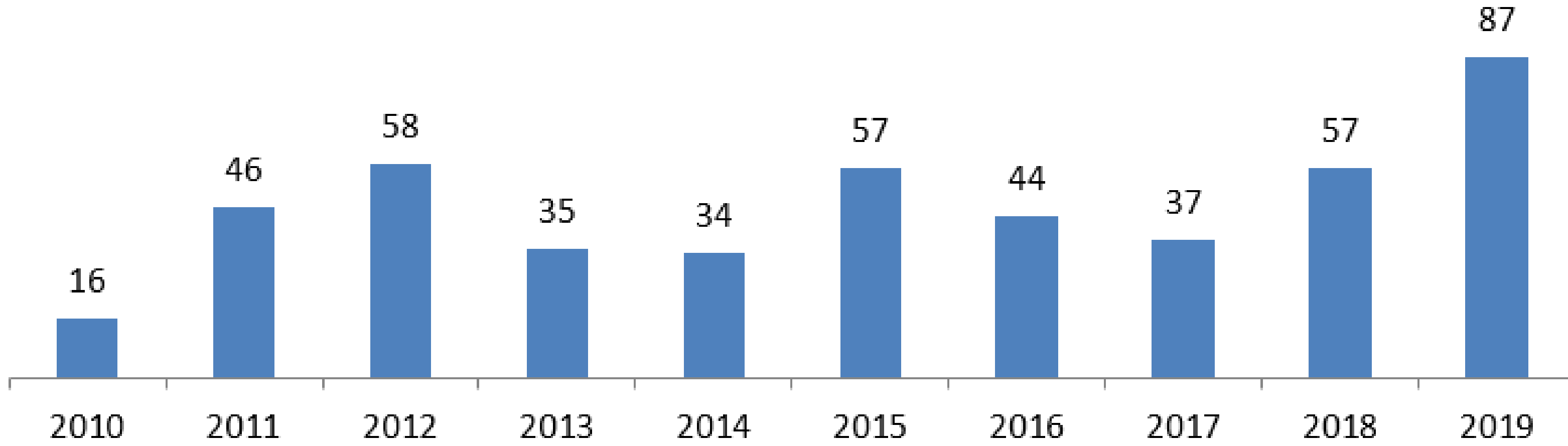
**to support Indigenous research
and research training in Canada**

2019 ——— 2022



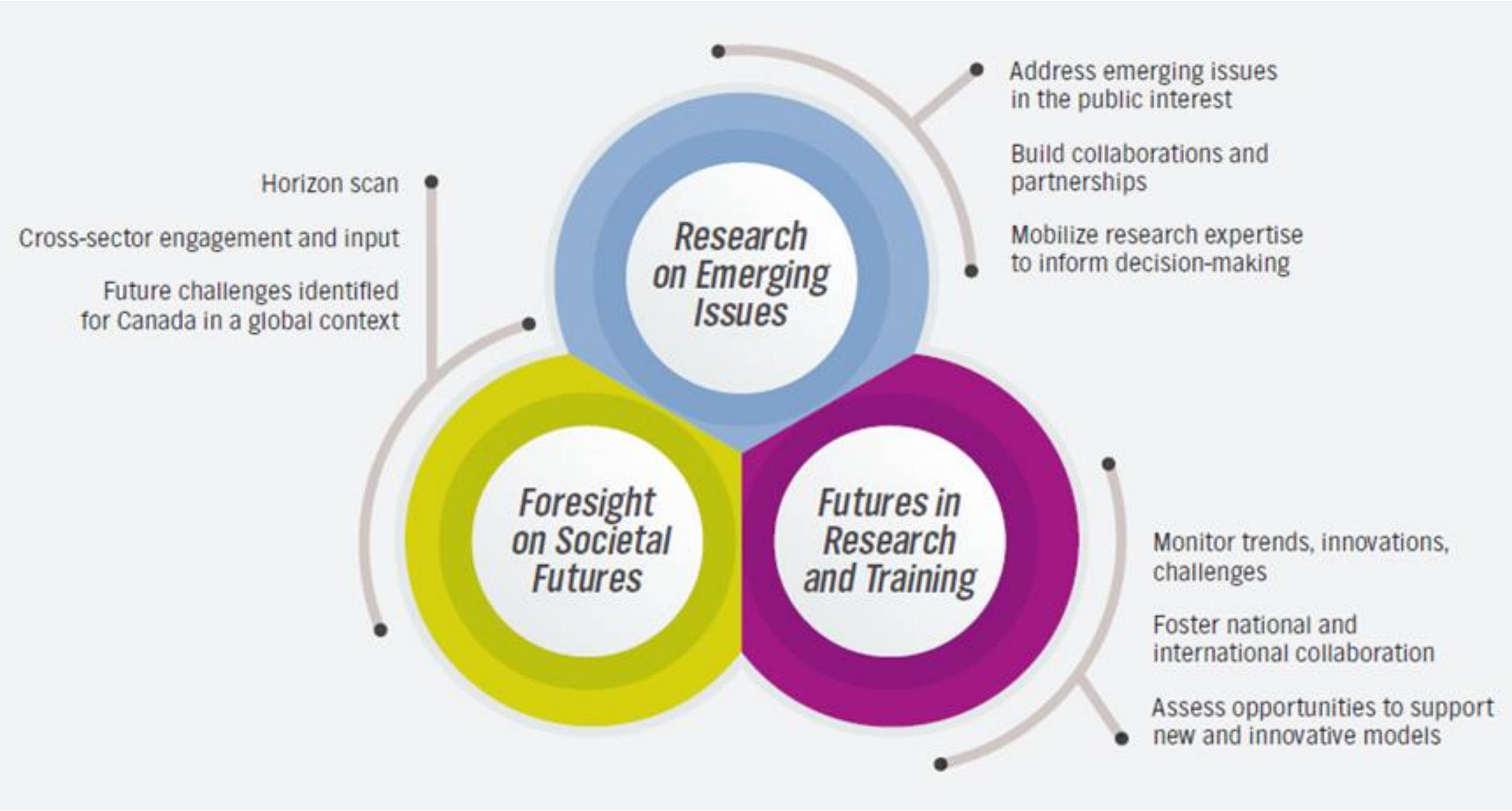
Strengthening Indigenous Research Capacity

**Self-identified Indigenous organizations
involved in SSHRC partnerships**



Innovative Solutions to Global Challenges and Opportunities

Imagining Canada's Future



Knowledge Synthesis Grants and Public Policy -

KSGs connect policy makers with SSH researchers:

Reports and Evidence Briefs

Forums

Knowledge Mobilization activities

Recent collaborations:

[Informing Best Practices in Environmental and Impact Assessments](#) (w/ Impact Assessment Agency of Canada)

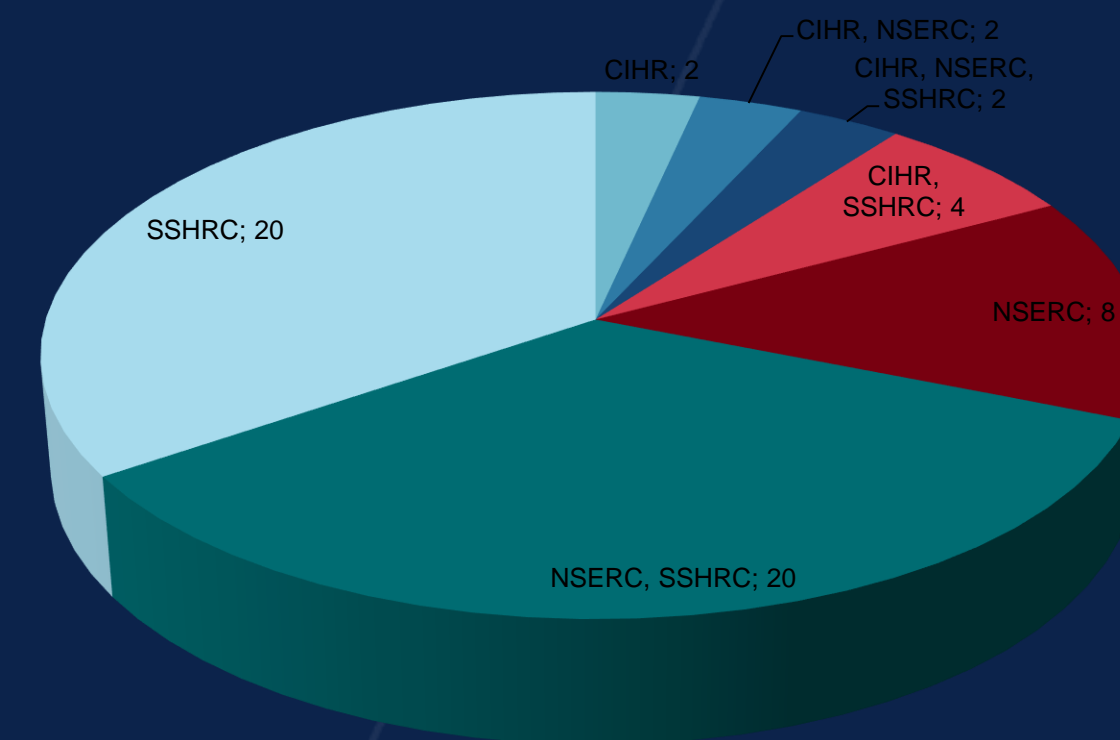
[Mobility and Public Transit](#) (w/ Infrastructure Canada)

[Indigenous Knowledge](#) (w/ Indigenous Services Canada)

[Future of Canada/UK Trade Relationships](#) (w/ ESRC, UK)

Example: Living within the Earth's Carrying Capacity

- Almost 50% of applications were interdisciplinary in nature, with the majority eligible for funding from two or more agencies (see chart, right).
- Of the 31 grants awarded, 21 went to research teams with 3-7 members.
- Team members include academics, and representatives from governments and NGOs. Three projects have international co-investigators.



ICF Ideas Lab – Pilot Project 2021

Topic: “Canada and the Circular Economy”

Objectives:

- Stimulate new multidisciplinary research collaborations
- Build capacity for interdisciplinary research
- Support innovative research addressing societal needs

Key features:

- Interactive 5-day facilitated residential workshop
- Up to 30 researchers - six spots for underrepresented groups
- Peer mentors / peer reviewers
- Two-stage merit review process:
 1. Initial project pitch at workshop
 2. Funding application for selected workshop teams

Outcomes:

- Up to 3 grants of up to \$250,000 for 2 years
- Grant holders apply to other funding opportunities

Research Talent: Developing skills in communication and knowledge mobilization

- International Policy Ideas Challenge - with Global Affairs Canada
- Dialogue Study Teams: Public Management and Governance in the Covid-19 Era - with the Canada School of Public Service
- Regional Student-led dialogues on Future Challenges - with the Canadian Association of Graduate Studies
- SSHRC's Storytellers Challenge

Futures in Knowledge Mobilization – new partnership with Canadian Commission for UNESCO and Research Impact Canada, results to be released Fall 2020.

“The challenges confronting humanity will demand knowledge mobilization processes that put our entire understanding of science and science-society relationships to the test. The complexity of the issues, in turn, points to a need for robust collaboration across disciplines...and between research centres and societal actors. “

Dick Bourgeois-Doyle, “Creative Collaboration for Knowledge Mobilization” in *Imagining the Future of Knowledge Mobilization: Perspectives from UNESCO Research Chairs*.

ursula.gobel@sshrc-crsh.gc.ca